

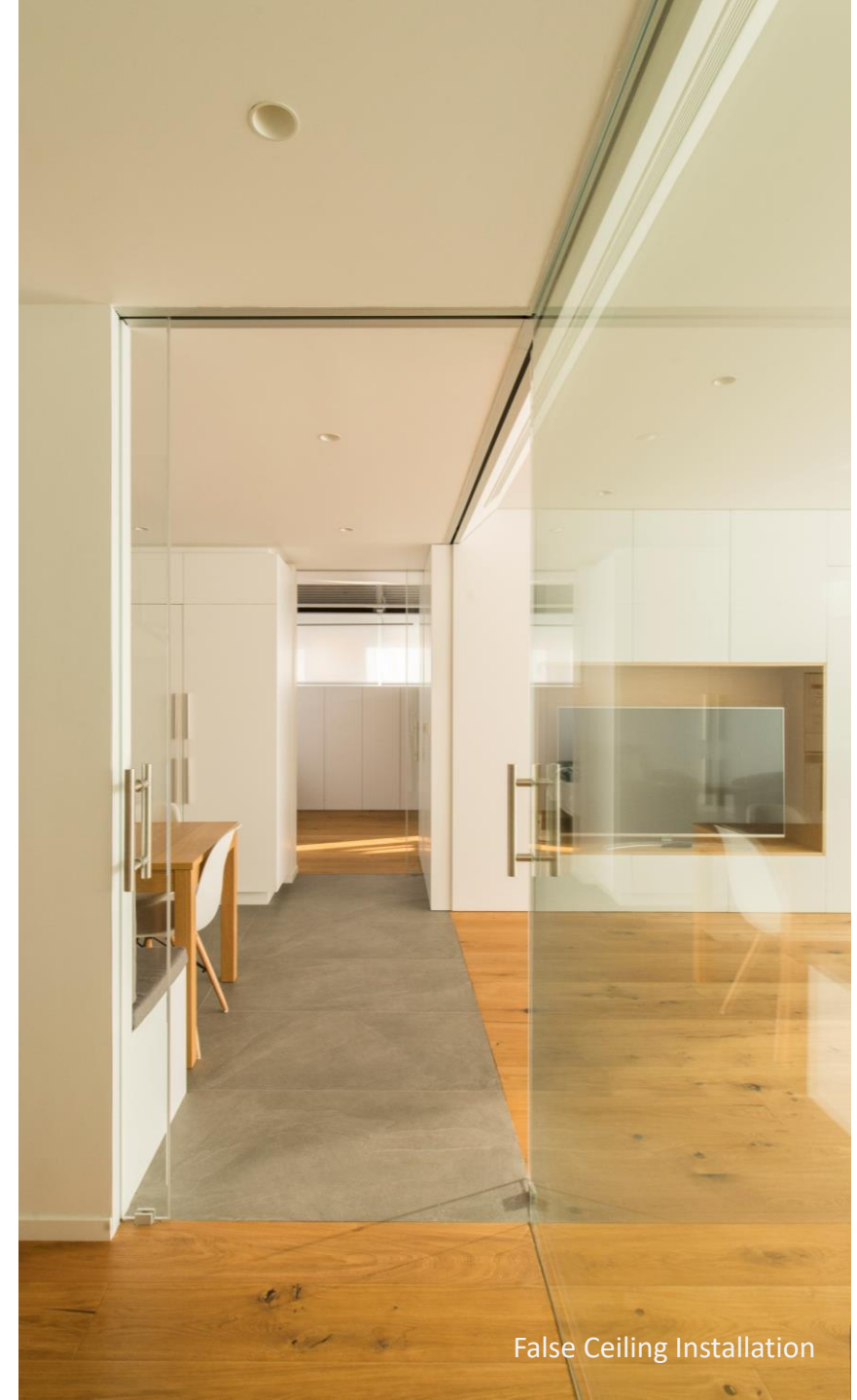
Compact Glass X

CRL



GENERAL FEATURES - SV-X

- **Frameless glass panels.** Compact sliding solution, **all components concealed within the top track** with no mechanisms visible.
- From **70kg/110kg/150kg per panel**
- **Latest technology** of the **soft closing**. Possibility of retaining brake or Soft closing for both, opening and closing.
- Attractive **minimalist design**, small top track
- Available in **4 different finishes** to adapt to any architectural environment
- For **8mm up to 14mm** Glass Thickness

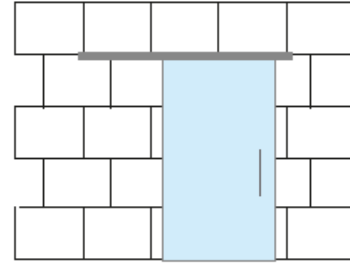


False Ceiling Installation

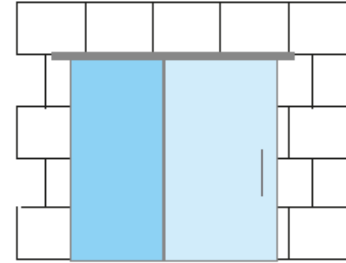
VARIANTS OF INSTALLATION

- Ceiling mount
- Wall mounted
- False Ceiling
- Glass Wall mount

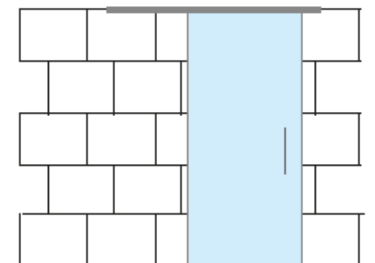
PARED
WALL
MUR



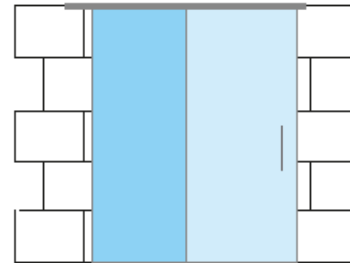
PARED CON VIDRIO FIJO
WALL WITH FIXED PANEL
MUR AVEC VERRE FIXE



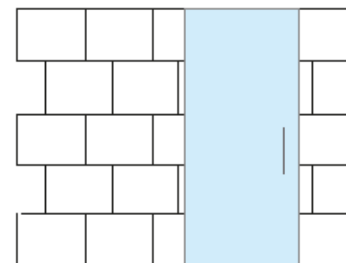
TECHO
CEILING
PLAFOND



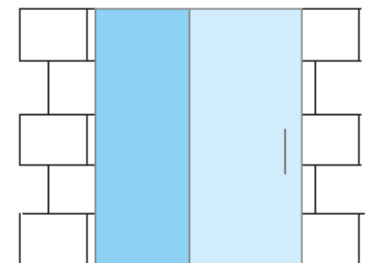
TECHO CON VIDRIO FIJO
CEILING WITH FIXED PANEL
PLAFOND AVEC VERRE FIXE



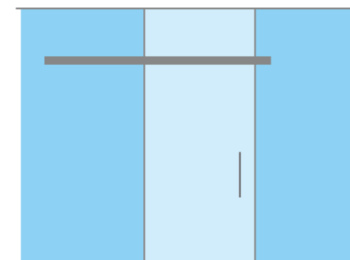
FALSO TECHO
FALSE CEILING
FAUX PLAFOND



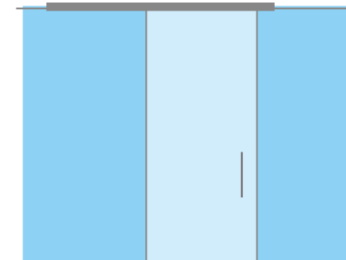
FALSO TECHO CON VIDRIO FIJO
FALSE CEILING WITH FIXED PANEL
FAUX PLAFOND AVEC VERRE FIXE



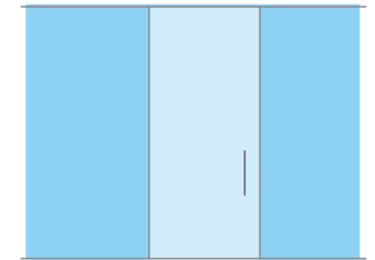
PARED DE VIDRIO
GLASS WALL
MUR DE VERRE



TECHO CON VIDRIO FIJO
CEILING WITH FIXED PANEL
PLAFOND AVEC VERRE FIXE

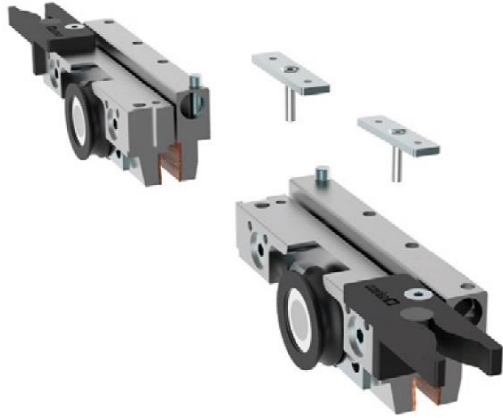


FALSO TECHO CON VIDRIO FIJO
FALSE CEILING WITH FIXED PANEL
FAUX PLAFOND AVEC VERRE FIXE



BREAKING OPTIONS

Retaining Break (normal stopper)



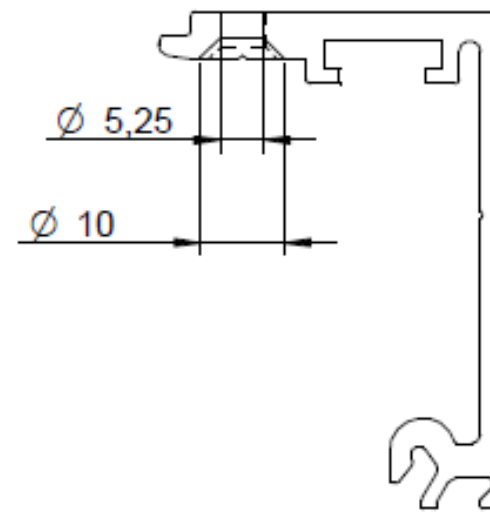
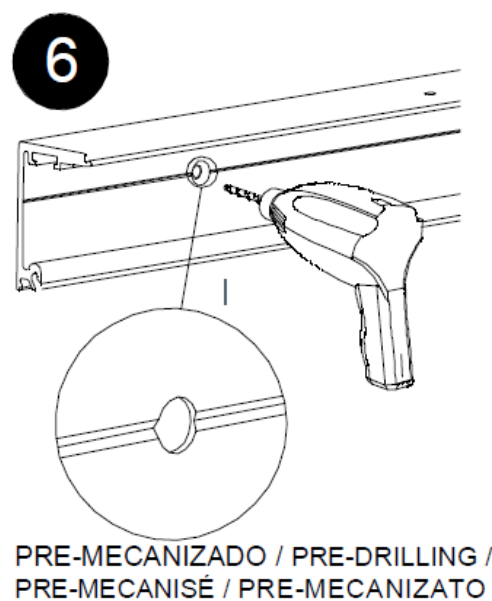
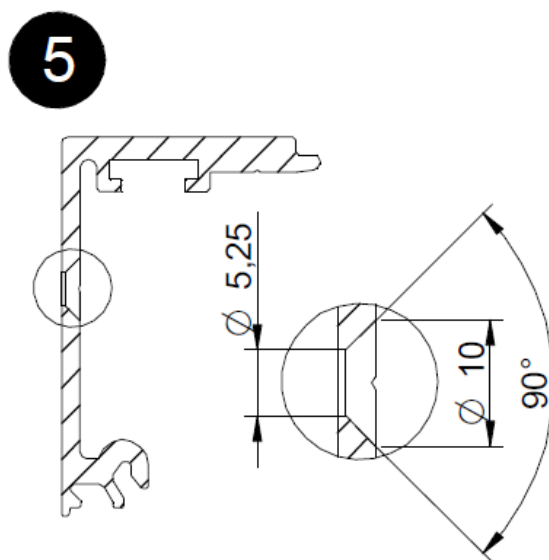
Soft Closing for Open and Closing



- **Soft closing** always recommended, not only provides a slow motion and **progressive closing**, but also greater **security and protection**.
- **Ball bearing Rollers** for smooth and silent sliding

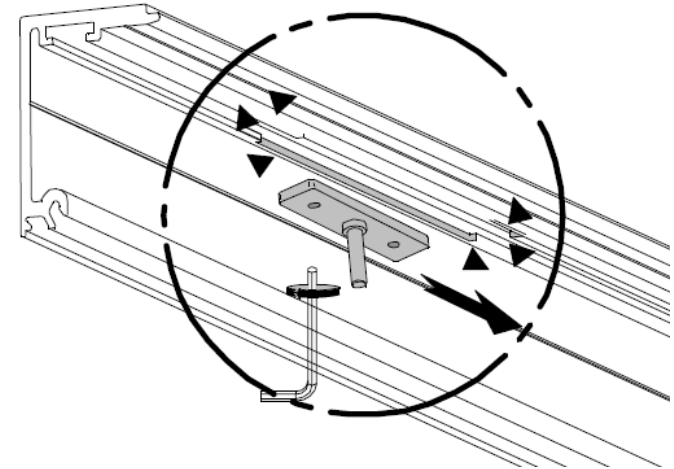
INSTALLATION CHARACTERISTICS

The **top tracks are served predrilled**, (for both wall and ceiling mount) to ease and fasten the installer's work.



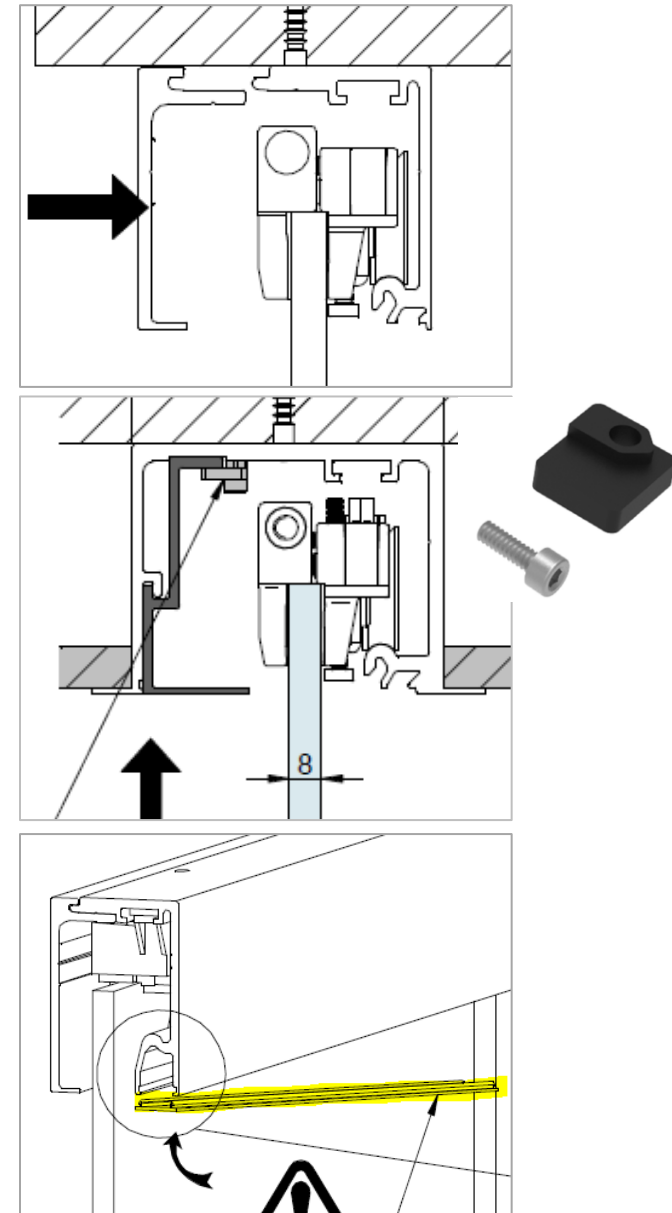
INSTALLATION CHARACTERISTICS

- The top track has a **register/groove along the track**. Easily to , and they can be moved and placed at the correct distance.
- The **stoppers/activators** are placed inside the top track



INSTALLATION CHARACTERISTICS

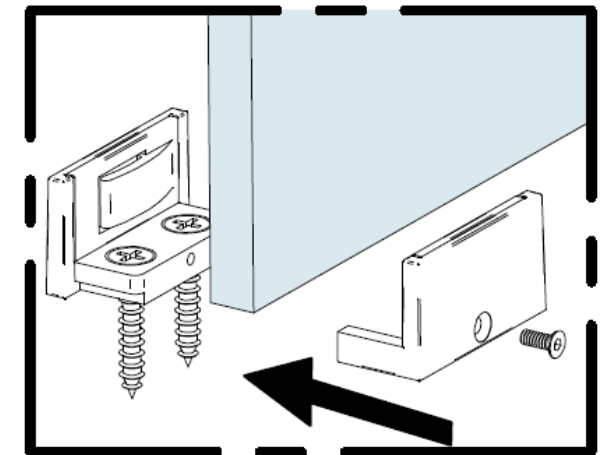
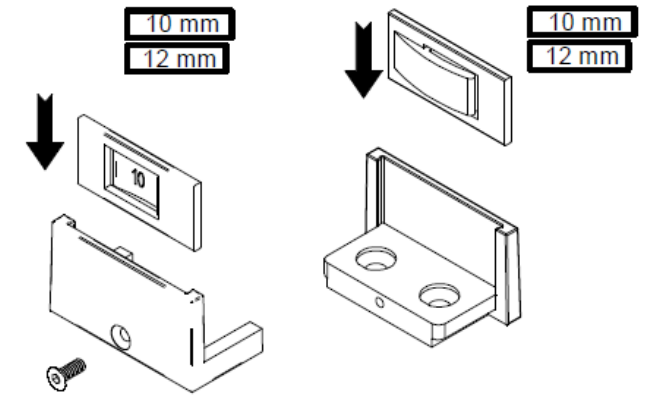
- **CEILING/WALL TOP TRACKS.** Composed by **two profiles** joined together. Allow direct access to mechanisms and to adjust the vertical regulations, or clamps screws, without disassembly.
- **FALSE CEILING TOP TRACKS.** Top track kits with covers for both fixed panel or single slider installations (versatility). Easy blocking component by turning
- **FIXED GLASS TRIM COVERS.** Easily clipped with any fixing required.



INSTALLATION CHARACTERISTICS

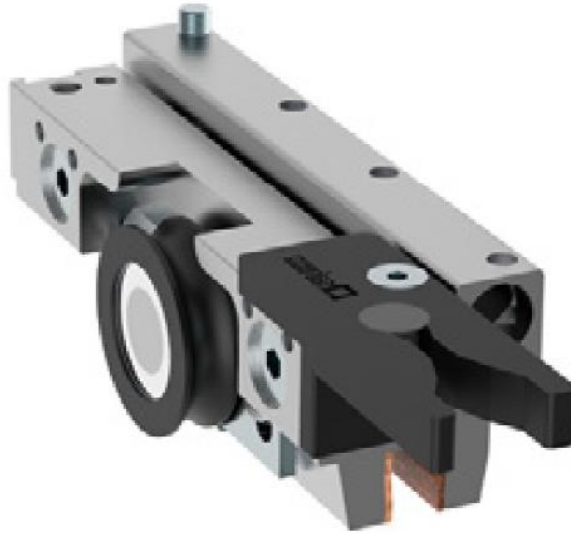
BOTTOM GUIDE

- Easy frontal installation
- Plastic clips suitable for 8-10-12mm glass thickness
- Plastic clips shaped to hold the door if wind & avoid shivering of the panel (noisy)



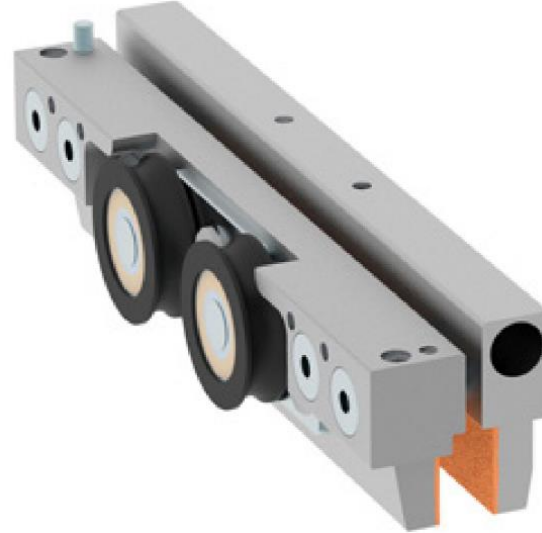
SV COMPACT-X CLAMPS

SV-X70



- 2 small - thickness
- 2 large - clamp fixing

SV-X110



- 4 small - thickness
- 4 large - clamp fixing

SV-X150

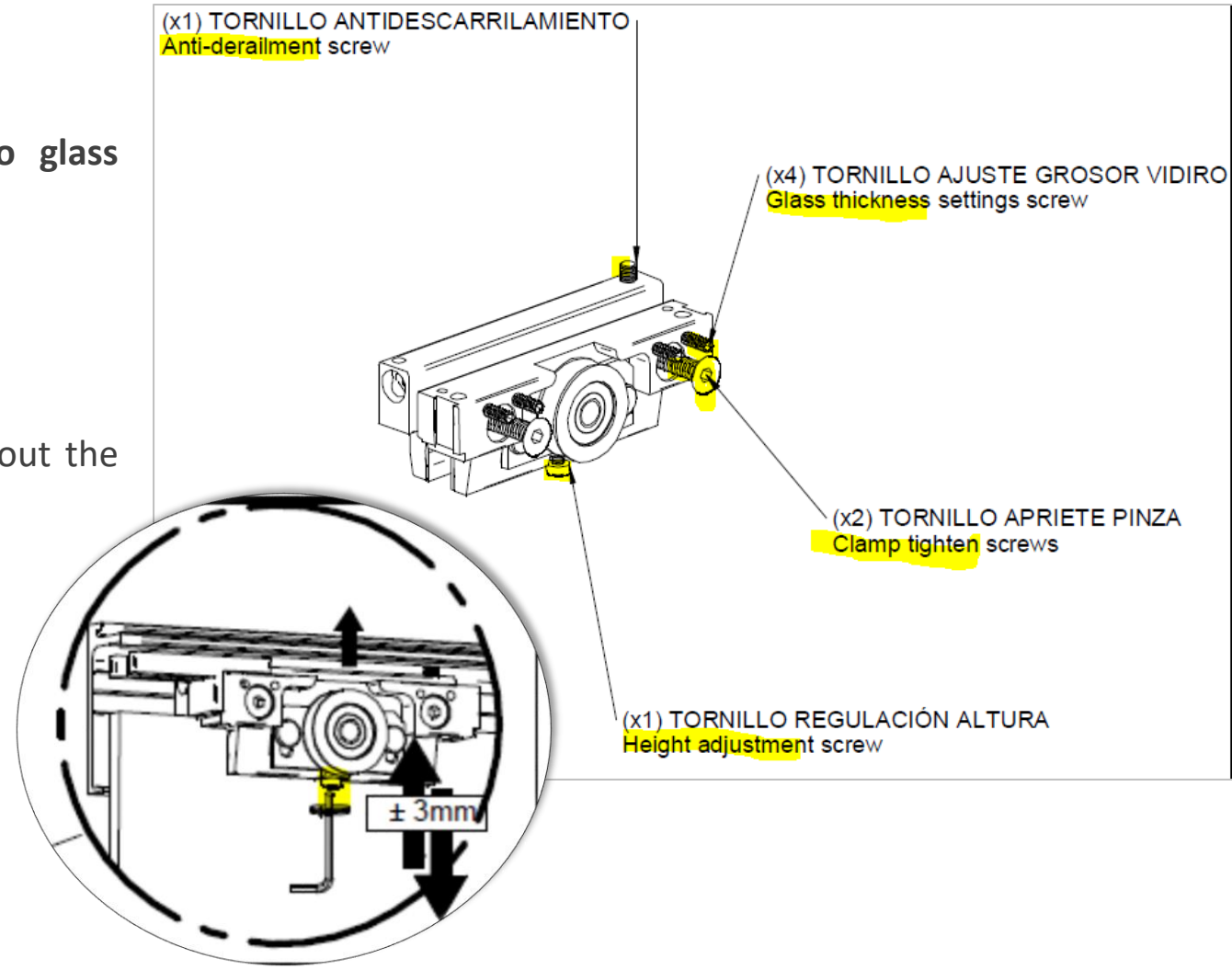


- 3 small - thickness
- 3 large - clamp fixing

INSTALLATION CLAMPS

The system is **QUICK AND PRACTICAL to install** thanks to different technical design aspects among the systems:

- The clamps are fixed by pressure and there is **no glass machining** required.
- Clamps have **all frontal regulations**.
- **Anti-jump screw**, to ensure that the door cannot fall out the rail with any impact or under any circumstances.
- The **vertical adjustment** is **+/-3mm**.



INSTALLATION CLAMPS



- **1st Step:** Unthight **large screws** slightly to fit glass.
- **2nd Step:** Tighten **small screws** slightly until they reach the other side of the clamp
- **3r Step:** Tighten **large screws**, at their maximum. Important that all are tighten with the same strength
- **4th Step:** Finish the fixing of the **small screws** (90 degrees)

BREAKING OPTIONS

Soft Brake (70kg)

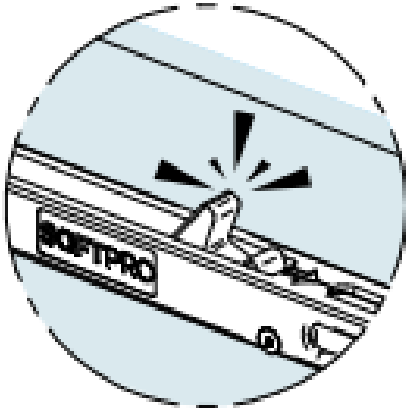


- **2 gas piston**
- **1 plastic mini clamp**
- **Activator + plate + stopper=**

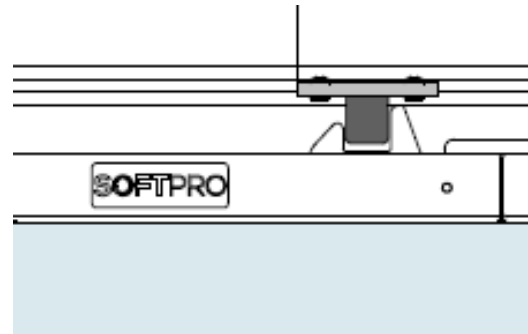
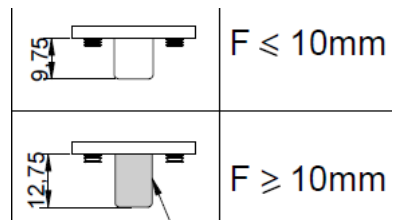
Easier install (distance given) &
safety in case of failure

INSTALLATION TIPS

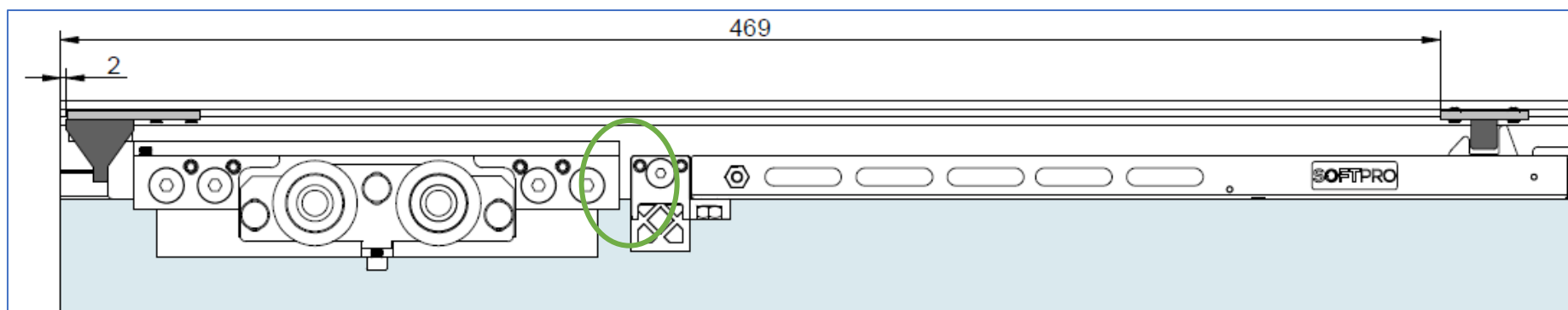
1. Always charge/activate softbrake



2. Height adjustment



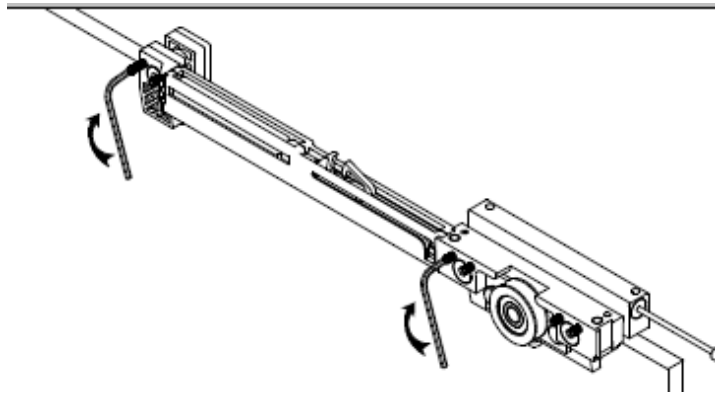
- Important because otherwise **soft close will not trigger**
- **Optimal surface contact** with the trigger
- If too high = the activator pin will **collision with the clamp** at first + hard to slide and eventually breakage of hardware

[illegible]

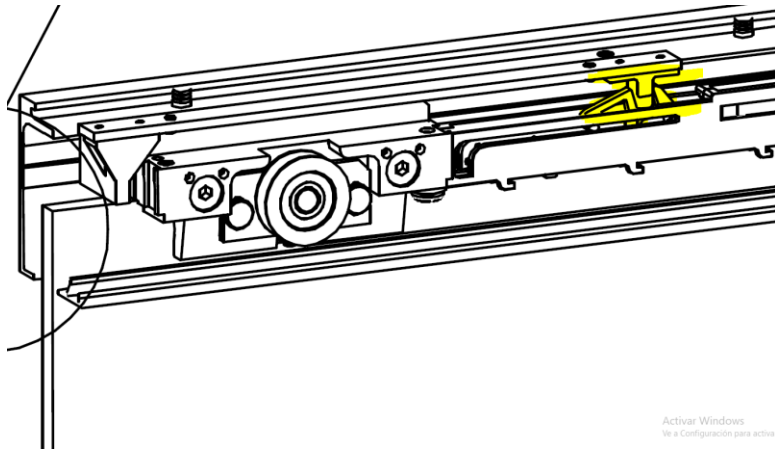
- If panel width is more than 1030 -> Activator must be placed at 469+E
- The Soft Pro is recommended to be installed always on **the center of the panel**

INSTALLATION TIPS

4. Make sure mini clamps are well tighten



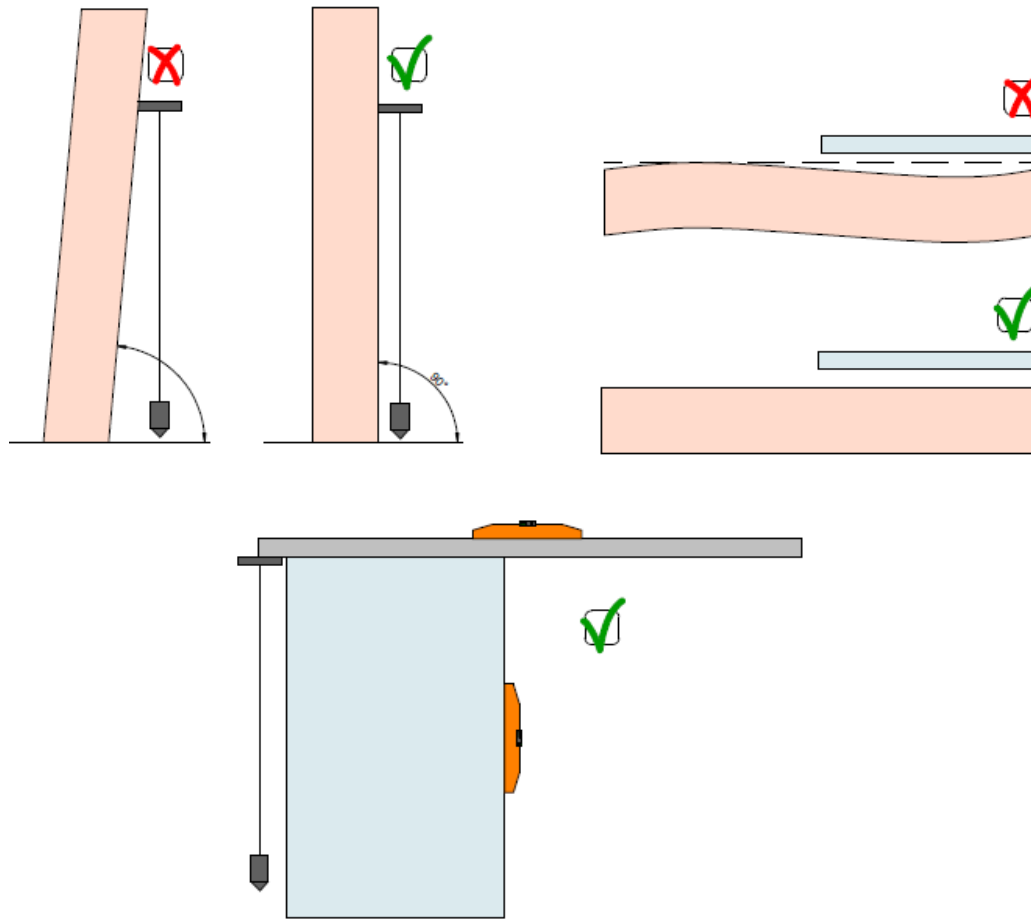
5. Make sure clamps are on the right hand-side



- If not: the soft brake can **shiver inside** and cause a crash.
- If placed on wrong side: the activator pin, fixed in inner top track, can **break the soft brake tabs**.

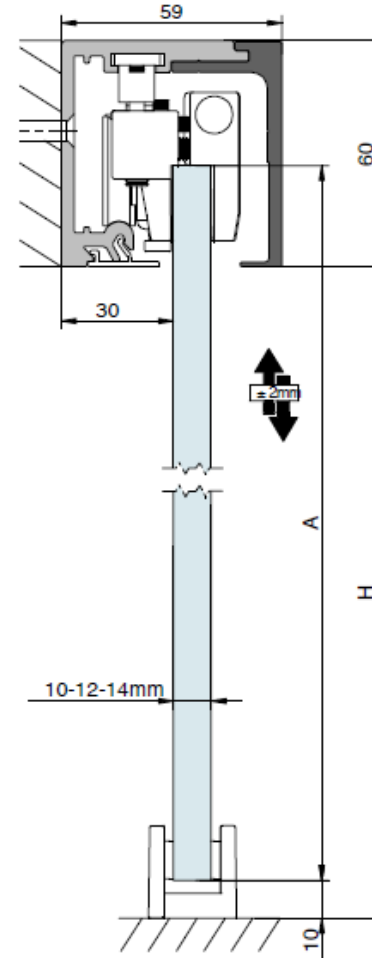
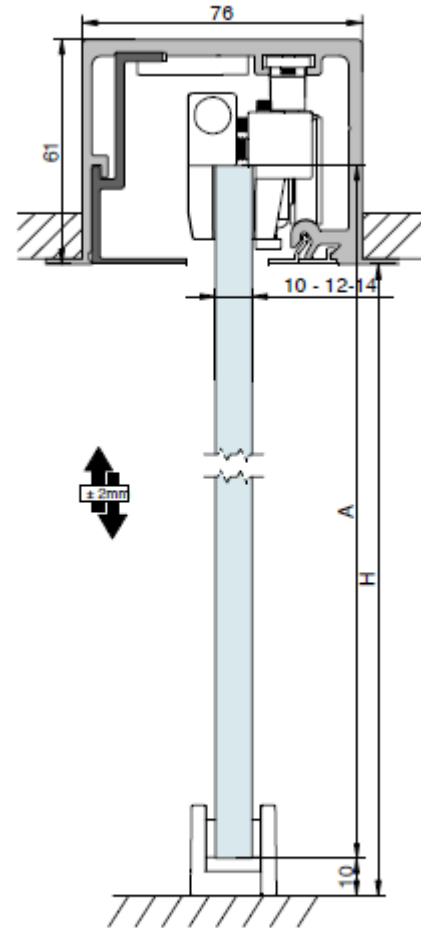
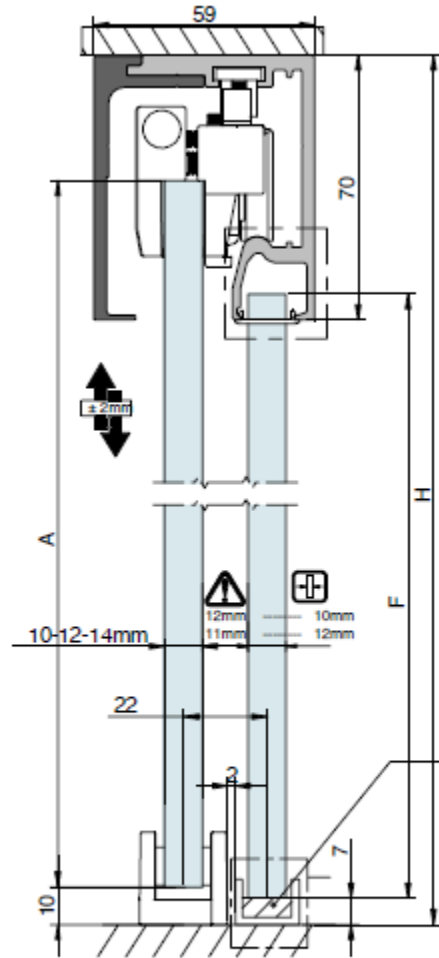
INSTALLATION TIPS

6. Ensure leveling in the 3 axes



- **Ceiling (length):** failure of softbrake trigger with activator
- **Ceiling (width):** collisions inside top track and misplacement of fixings e.g anti-jump
- **Wall:** ensure equal distance to wall

HEIGHT PANEL FORMULA



X

○ Suggestion:

Always round downwards for the height of the glass.

Unlevelled installation with tight glass = collision

$H = X - 60$
 $A = H + 17$

Maintenance Recommendations

Compact X cleaning tips

- Annual cleaning of the track's rolling part with a dry cloth.
- Annual cleaning of the bottom guide and its contact area (bottom part of the glass sliding panel) with a dry cloth.

Compact X maintenance tips

- Clamps adjustment every 2 years or 20.000 cycles.
- Complete installation adjustment (fasteners and screws) every 2 years or 20.000 cycles.

Frame Profiles Cleaning Tips

- Do not use abrasive products that contain chlorohydric acid for the lacquered frame.
- When cleaning the glass, use vaporized products or aerosol. Avoid direct contact between the liquid and the inner self-adhesive junction.

IMPORTANT: These maintenance and cleaning recommendations by Saheco are intended to contribute to the systems performance during its life. It is not an extension of the guarantee.